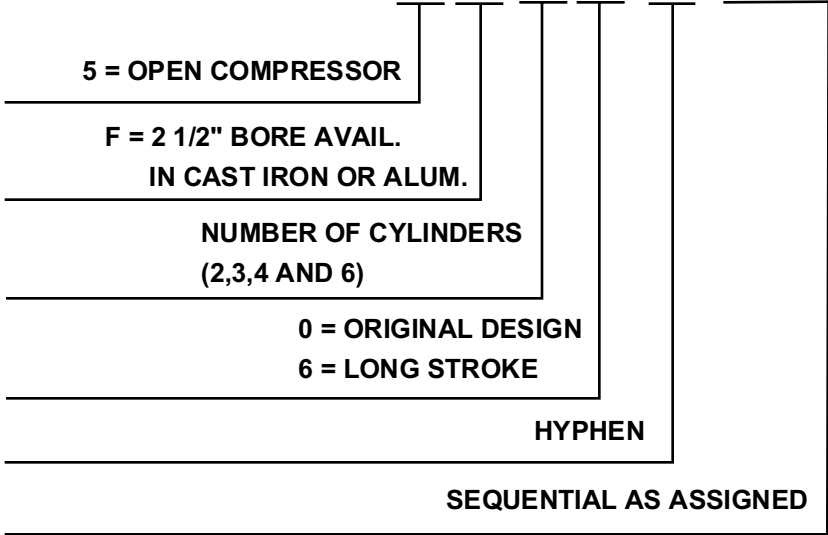


**MODEL NUMBER SIGNIFICANCE CHART**

|   |   |   |   |   |   |   |   |   |
|---|---|---|---|---|---|---|---|---|
| 1 | 2 | 3 | 4 | 5 | 6 | 7 | 8 | 9 |
| 5 | F | 2 | 0 | - | A | 1 | 4 | 9 |



Bowman Refrigeration  
206-706-3033

Model 5F30.....

Description OPEN DRIVE COMPRESSORS BELT & DIRECT DRIVE, 3 CYL

| Itm# | Qty | Rec | Part Number  | Description   |
|------|-----|-----|--------------|---|
| 1A   | 1   | -   | 5F30S644     | W/O UNLOADER REMAN(OLD C'CASE)  |
| 1B   | 1   | -   | 5F30A644     | W/O UNLOADER REMAN  |
| 1C   | 1   | -   | 5F30S644     | W/O UNLOADER NEW  |
| 1E   | 1   | -   | 5F30A664     | WITH UNLOADER (1) REMAN   |
| 1F   | 1   | -   | 5F30S664     | WITH UNLOADER (1) NEW   |
| 1G   | 1   | -   | 5F30S664     | W/UNLOADERS(2)REMAN(OLD C'CASE)(W/OIL)  |
| 1H   | 1   | -   | 5F30A664     | WITH UNLOADERS (2) REMAN  |
| 1J   | 1   | -   | 5F30S664     | WITH UNLOADERS (2) NEW  |
| 20   | 1   | R   | KM01BC200    | GAUGE,OIL PRESS (0-200 #)   |
| 21A  | 1   | R   | HK02HA012    | PRESS CNTRL HI-SIDE (ALLEN BRADLEY)   |
| 21B  | 1   | R   | HK02HB012    | PRESS CNTRL LO-SIDE (ALLEN BRADLEY)   |
| 21C  | 1   | R   | HK680018     | PRESS CNTRL HI-SIDE (ROBERTSHAW)  |
| 21D  | 1   | R   | P527-1122    | PRESS CNTRL L0-SIDE (DANFOSS)   |
| 24   | 1   | -   | HK09UZ012    | ENCLOSURE,ROBERTSHAW  |
| 25   | 1   | -   | P529-4120    | SW,OIL SAFETY (46-48 TO INSTALL)  |
| 26   | 2   | -   | DD07UA051    | UNION,HALF (1/4 NPT X 1/4 FL)   |
| 27   | 1   | -   | 5F201311     | ADAPTER (1/4" FPT TO 5/8-18)  |
| 28   | 1   | -   | AU51YA011    | GASKET,WASHER (5/8)   |
| 29   | 1   | -   | KH51ZZ100    | OIL COOLER (BASE MOUNTED)   |
| 30   | 1   | -   | NLA          | OIL COOLER (COMPRESSOR MOUNTED)   |
| 94   | 1   | -   | EN99ZA006    | REPLACEMENT SEAL CAP (MUELLER ONLY)   |
| 110  | 1   | R   | 06DA660065   | DISCHARGE VALVE PKG(1 3/8ODS;4 BLT):<br>INCLUDES: ITEMS 111 - 115A  |
| 111  | 1   | R   | NOTAVAILABLE | > VALVE,DISCHARGE   |
| 112  | 1   | R   | 5F301361     | > GASKET,DISCH. VALVE   |
| 113  | 4   | -   | NOTAVAILABLE | > BOLT,HEX HEAD   |
| 114  | 1   | -   | EN99ZA006    | > CAP,SEAL (MUELLER ONLY)   |
| 115  | 1   | -   | EN99ZA102    | > GSKT,SEAL CAP (MUELLER ONLY)  |
| 140A | 1   | -   | EN99ZA013    | > CAP,SEAL (HENRY ONLY)   |
| 149  | 1   | -   | EN99ZA013    | > CAP,SEAL (HENRY W/GSKT)   |
| 153  | 1   | R   | 06EA660090   | SUCTION VALVE PKG (1 5/8 ODS;4 BLT):<br>INCLUDES: ITEMS 154 - 159A  |
| 154  | 1   | -   | NOTAVAILABLE | > VALVE,SUCTION VALVE   |
| 155  | 1   | R   | 6D681131     | > GASKET,SUCTION VALVE  |
| 156  | 4   | -   | AA06BR299    | > CAPSCREW,HEX HEAD   |
| 157  | 1   | -   | EN99ZA006    | > CAP,SEAL (MUELLER ONLY)   |
| 157A | 1   | -   | EN99ZA013    | > CAP,SEAL (HENRY ONLY)   |
| 159  | 1   | -   | EN99ZA103    | > GSKT,SEAL CAP (MUELLER)   |
| 171A | 1   | -   | 5F20874      | BELT GUARD ASSEMBLY   |
| 172  | 1   | -   | 5F20238      | BASE ASSY,BELT DR W/5F20,30 COND  |
| 173  | 1   | -   | 5F40408      | BASE ASSY,BELT DR W/5F40,60 COND  |
| 177  | 1   | -   | 5F20569      | BASE ASSY BELT DR W/OLD NEMA MTR  |
| 179  | 1   | -   | 5F401572     | SHIM,COMPR LEVEL LAMINATED BRASS  |
| 180  | 1   | -   | 5F401712     | SHIM,COMPR LEVEL STL,#22 GA   |
| 181  | 1   | -   | 5F401702     | SHIM,MOTOR LEVEL LAMINATED BRASS  |
| 182  | 1   | -   | 5F401712     | SHIM,MOTOR LEVEL STL,#22 GA   |
| 184  | 1   | -   | 05HY500853   | MUFFLER (1 3/8 ODF X 1 5/8 ODM)   |
| 185  | 1   | -   | PH23GL012    | PAINT,SPRAY (SEA SPRAY GREEN)   |
| 185A | 1   | -   | PH23SK016    | PAINT,SPRAY (ICE GREY)  |
| 186  | 1   | R   | 5F20660001   | GASKET SET:<br>NOTE: GASKET SET CONTAINS ITEMS 82,92,138,147,194,202,225,243,258,280,<br>293,308,358,359,362,375,402 & 427 IN QUANTITIES SUFFICIENT FOR 1 COMP. |
| 187  | 1   | -   | NOTAVAILABLE | CRANKCASE ASSY (W/O UNLOADERS):<br>INCLUDES: ITEMS 188 - 194  |
| 188  | 1   | -   | 5F301012     | > BEARING,SEAL END MAIN   |
| 189  | 6   | -   | AX11AR197    | > PIN,DOWEL (VALVE PLATE)   |
| 190  | 1   | -   | AX35HR120    | > PIN,GROOVE (BEARING WASHER)   |
| 191  | 1   | -   | 5F203742     | > CASING,HEATER (7 3/8 DEEP)  |

Bowman Refrigeration  
206-705-3033

| Itm# | Qty | Rec | Part Number  | Description   |
|------|-----|-----|--------------|---|
| 192  | 1   | -   | CA99AA101    | > PLUG,MAGNETIC (5/8-18)  |
| 193  | 1   | -   | CA63AA051    | > PLUG,PIPE (1/4 NPT)   |
| 194  | 2   | -   | AU51YA011    | > GASKET (5/8):<br>NOTE: CYLINDER IDENTIFICATION (1L,1R,2L) IS DETERMINED BY VIEWING THE COMPRESSOR FROM THE PUMP END,AND 1L IS THE FIRST ONE ON LEFT SIDE. |
| 195  | 1   | -   | NOTAVAILABLE | CRANKCASE ASSY (W/UNLOADERS):<br>INCLUDES: ITEMS 196 - 211  |
| 196  | 1   | -   | 5F301012     | > BEARING,SEAL END MAIN   |
| 197  | 6   | -   | AXIIR197     | > PIN,DOWEL (VALVE PLATE)   |
| 198  | 1   | -   | AX35HR120    | > PIN,GROOVE (BEARING WASHER)   |
| 199  | 1   | -   | 5F203742     | > CASING,HEATER (7 3/8 DEEP)  |
| 200  | 1   | -   | CA99AA101    | > PLUG,MAGNETIC (5/8-18)  |
| 201  | 1   | -   | 5H401141     | > PLUG,BY PASS (5/8-18)   |
| 202  | 2   | -   | AU51YA011    | > GASKET (5/8)  |
| 203  | 1   | -   | 5F305412     | > UNLOADER OIL TUBE ASSY  |
| 210  | 2   | -   | 5H401531     | > FERRULE,TUBE (3/16)   |
| 211  | 1   | -   | 5H401541     | > FERRULE,TUBE (1/4)  |
| 212  | 1   | R   | HT31AZ120    | HEATER ELEMENT (120V,100W,3.12 LG)  |
| 213  | 1   | R   | HT31AR130    | HEATER ELEMENT (240V,100W,3.12 LG)  |
| 214  | 1   | R   | HT31AZ120    | HEATER ELEMENT (120V,100W,8.25 LG)  |
| 215  | 1   | R   | HT31AZ240    | HEATER ELEMENT (240V,100W,8.25 LG)  |
| 216  | 1   | -   | 5F403742     | CASING,HEATER (3 1/2 DEEP)  |
| 216A | 1   | -   | 5F203742     | CASING,HEATER (8 1/2 DEEP)  |
| 217  | 1   | -   | HW25FA005    | COUPLING,HEATER (1/2NPT/1"COND)   |
| 218  | 1   | -   | HN61AJ101    | RELAY,HEATER (115V,50/60 HZ)  |
| 219  | 1   | -   | HN61AJ108    | RELAY,HEATER (230V,50/60 HZ)  |
| 220  | 2   | -   | 5F20A792     | CHECK VALVE PKG,OIL RETURN:<br>INCLUDES: ITEMS 221 - 223  |
| 221  | 1   | -   | NOTAVAILABLE | > VALVE,CHECK   |
| 222  | 1   | -   | AU27AR271    | > LOCK WASHER,CHECK VALVE   |
| 224  | 1   | -   | 5F201133     | PLATE,BOTTOM  |
| 225  | 1   | -   | 5F201813     | GASKET,BOTTOM PLATE   |
| 226  | 3   | -   | 5F202263     | HEAD,CYLINDER   |
| 227  | 3   | R   | 5F201093     | GASKET,CYLINDER HEAD  |
| 228  | 1   | -   | 5F30172      | WATER COOLED CYL.HEAD PKG(FIN GOODS):<br>INCLUDES: ITEMS 229 - 241  |
| 229  | 3   | -   | 5F201004     | > HEAD,CYLINDER   |
| 230  | 3   | R   | 5F201093     | > GASKET,CYLINDER HEAD  |
| 231  | 3   | -   | 5F201434     | > COVER,CYLINDER HEAD   |
| 232  | 3   | R   | 5F201703     | > GASKET,CYLINDER HEAD COVER  |
| 233  | 3   | -   | AX11AR062    | > PIN,DOWEL   |
| 234  | 24  | -   | AA06BR230    | > CAPSCREW,HX HD (3/8-16)   |
| 235  | 24  | -   | AA06GR241    | > CAPSCREW,HX HD (3/8-16)   |
| 238  | 1   | -   | 5F30573      | > TUBE ASSY,WATER (CTR/LEFT)  |
| 239  | 1   | -   | 5F30A302     | > TUBE ASSY,WATER (CTR/RHT)   |
| 240  | 2   | -   | DD10CA208    | > ELBOW,HALF UNION  |
| 241  | 2   | -   | DD07DA208    | > COUPLING,HALF UNION   |
| 242  | 1   | -   | 5F30132      | STRAINER ASSY,SUCTION   |
| 243  | 1   | R   | 5F301831     | GASKET,SUCTION STRAINER   |
| 250  | 3   | -   | 5F301003     | SLEEVE,CYLINDER (W/UNL. PIN HOLES)  |
| 251  | 1   | R   | 5F202653     | SCREEN ASSY ,OIL FILTER   |
| 259  | 2   | -   | DD22DA051    | VALVE ASSEMBLY,CHECK (SCHRADER)   |
| 262  | 1   | R   | 5H40962      | OIL REG.VALVE PKG NON ADJUST.:<br>INCLUDES: ITEMS 263 - 265   |
| 263  | 1   | -   | NOTAVAILABLE | > CARTRIDGE   |
| 264  | 1   | -   | 5H403982     | > CAP   |
| 265  | 1   | -   | AU51YA011    | > GASKET  |
| 266  | 14  | -   | AA06BR230    | CAPSCREW,HEX HEAD (3/8-16)  |
| 267  | 16  | -   | AA06GR239    | CAPSCREW,HEX HEAD (3/8-16)  |
| 268  | 38  | -   | AU51YA008    | GASKET,CAPSCREW (3/8)   |

Bowman Refrigeration  
206-706-3033

| Itm# | Qty | Rec | Part Number  | Description  |
|------|-----|-----|--------------|--|
| 271  | 1   | R   | 5F20152      | SIGHT GLASS PACKAGE:<br>INCLUDES: ITEMS 272 - 277  |
| 272  | 1   | R   | NOTAVAILABLE | > SIGHT GLASS ASSEMBLY   |
| 273  | 1   | R   | 5F201631     | > GASKET,SIGHT GLASS   |
| 274  | 1   | -   | NLA          | > GLASS,SIGHT  |
| 275  | 1   | -   | NLA          | > GLAND,SIGHT GLASS  |
| 276  | 1   | R   | 5F201011     | > GASKET,SIGHT GLASS INNER   |
| 277  | 1   | R   | 5F201631     | > GASKET,SIGHT GLASS OUTER   |
| 278  | 1   | R   | 5F20676      | SHAFT SEAL ASSEMBLY (SEE NOTE):<br>Important! If a gap exists between the seal cover plate and crankcase order item #268. If no gap exists order item #282.  |
| 279  | 1   | -   | NOTAVAILABLE | > RING,CARBON (SEE NOTE)   |
| 280  | 1   | -   | 7F30112      | > GASKET,COVER PLATE RING  |
| 281  | 1   | -   | 5F204942     | > PLATE,COVER (W/O DOWEL PINS)   |
| 282  | 1   | R   | 05HG660006   | SHAFT SEAL ASSEMBLY (SEE NOTE):<br>Important! If no gap exists between the seal cover plate and crankcase order item #282. If a gap exists order item #278.  |
| 283  | 1   | -   | NOTAVAILABLE | > RING,CARBON (SEE NOTE)   |
| 284  | 1   | -   | 5F361032     | > GASKET,COVER PLATE FULL FACE   |
| 285  | 1   | -   | 5F20A382     | > PLATE,COVER (WITH DOWEL PINS)  |
| 290  | 6   | -   | NOTAVAILABLE | CAPSCREW,HEX HEAD (SHAFT SEAL CVR)   |
| 291  | 2   | -   | AX11AR162    | PIN,DOWEL:<br>NOTE: ONLY CARBON RINGS DAMAGED IN SHIPPING OR INSTALLATION SHOULD BE REPLACED. NOT RECOMMENDED IF SEAL HAS BEEN IN OPERATION.<br>OLD C'CASE IS IDENTIFIED BY A RAISED LIP ON SEAL END FLANGE.<br>FOR REPLACING OLD STATIONARY BELLOWS TYPE SEAL ,USE SEAL PKG 5F20-676. |
| 292  | 1   | R   | 5F30677      | BEARING HEAD & OIL PUMP ASSY:<br>INCLUDES: ITEMS 293 - 309   |
| 293  | 1   | R   | 5F201113     | > GASKET,BEARING HEAD  |
| 294  | 1   | -   | 5F401022     | > BEARING,PUMP END MAIN  |
| 295  | 1   | -   | CA99AA101    | > PLUG,MAGNETIC (5/8-18)   |
| 296  | 1   | -   | 5H401141     | > PLUG,OIL BYPASS (5/8-18)   |
| 297  | 1   | -   | 5H401971     | > STRAINER,CONTROL   |
| 298  | 1   | -   | AF20AA313    | > SCREW,HOLLOW LOCK  |
| 299  | 2   | -   | 5F201311     | > ADAPTER(1/4"FPT TO 5/8-18)MOD.VALVE  |
| 300  | 1   | -   | 5H401981     | > DISC,ORIFICE   |
| 301  | 3   | -   | AU51YA011    | > GASKET,CAPSCREW (5/8)  |
| 302  | 12  | -   | AU51YA011    | > GASKET,CAPSCREW (3/8)  |
| 303  | 6   | -   | AB06BR168    | > CAPSCREW,HEX HEAD  |
| 304  | 6   | -   | AU51YA001    | > GASKET,CAPSCREW (1/4)  |
| 305  | 1   | -   | AX35HR120    | > PIN,GROOVED HEAD   |
| 306  | 1   | R   | 5F20A272     | > OIL PUMP PACKAGE   |
| 307  | 1   | -   | NOTAVAILABLE | > COVER,IDLER,ROTOR AND BUSHING  |
| 308  | 1   | -   | 6F251031     | > GASKET,OIL PUMP COVER  |
| 309  | 1   | R   | 5F201113     | > GASKET,BEARING HEAD  |
| 311  | 12  | -   | AA06BR234    | CAPSCREW,HEX HEAD  |
| 316  | 1   | R   | EB02AD002    | CAPACITY CONTROL VALVE (R-12)  |
| 317  | 1   | R   | EB02AD003    | CAPACITY CONTROL VALVE (R-22,500)  |
| 318  | 1   | -   | KA73RR025    | FLEX HOSE (CAP. CONTROL VALVE)   |
| 319  | 1   | -   | 05HG660005   | CRANKSHAFT PACKAGE:<br>INCLUDES: ITEM 320  |
| 320  | 1   | -   | 5F205232     | > KEY,CPLG(5/16 X 5/16 X 1.25 LG)  |
| 323  | 1   | -   | AW21FD722    | KEY,WOODRUFF   |
| 324  | 1   | -   | AU02AA361    | WASHER,PLATE (FLYWHEEL)  |
| 325  | 1   | -   | AT61AA362    | LOCKNUT (3/4-16)   |
| 329  | 3   | -   | 5F20103      | CONNECTING ROD PACKAGE:<br>INCLUDES: ITEMS 330 - 333   |
| 330  | 1   | -   | NOTAVAILABLE | > ROD,CONNECTING   |
| 331  | 2   | -   | 5F201041     | > BOLT,CONN.ROD  |
| 332  | 2   | -   | AT61AA202    | > NUT,CONN.ROD LOCK 5/16-24  |
| 333  | 1   | -   | 5F201031     | > BUSHING,PISTON PIN   |
| 334  | 2   | -   | 5F201002     | CONN.ROD BEARING PKG (SEE 348/352):<br>INCLUDES: ITEM 335  |

Bowman Refrigeration  
206-706-3033

| Itm# | Qty | Rec | Part Number  | Description   |
|------|-----|-----|--------------|---|
| 335  | 6   | -   | 5F201002     | > BEARING HALF,CONN.ROD   |
| 337  | 1   | -   | 5F201741     | WASHER,BEARING (BRONZE)(PUMP END)                                   |
| 338  | 1   | -   | 5F201761     | WASHER,THRUST (STEEL) (SEAL END)                                    |
| 339  | 1   | -   | 5F201741     | WASHER,BEARING (BRONZE)(SEAL END)                                   |
| 341  | 3   | -   | 5F20482      | PISTON AND PIN PACKAGE:<br>INCLUDES: ITEMS 342 - 344                |
| 342  | 1   | -   | 5F201051     | > PIN,PISTON  |
| 343  | 2   | -   | 5F203521     | > LOCK RING,PISTON PIN  |
| 344  | 1   | -   | NOTAVAILABLE | > PISTON (LESS RINGS)   |
| 345  | 1   | -   | 5F20481      | PISTON RING PACKAGE:<br>INCLUDES: ITEMS 346 - 347                   |
| 346  | 8   | -   | NOTAVAILABLE | > RING,COMPRESSION  |
| 347  | 8   | -   | NOTAVAILABLE | > RING,OIL (SLOTTED)  |
| 348  | 2   | -   | 5F203422     | CONNECTING ROD BEARING PKG (-.010):<br>INCLUDES: ITEM 349           |
| 349  | 4   | -   | NOTAVAILABLE | > BEARING HALF,CONNECTING ROD                                       |
| 350  | 1   | -   | 5F303442     | BEARING,SEAL END MAIN (-.010)                                       |
| 351  | 1   | -   | 5F403462     | BEARING,PUMP END MAIN (-.010)                                       |
| 352  | 2   | -   | 5F203432     | CONNECTING ROD BEARING PKG(-.020):<br>INCLUDES: ITEM 353            |
| 353  | 4   | -   | NOTAVAILABLE | > BEARING HALF,CONNECTING ROD                                       |
| 354  | 1   | -   | 5F303452     | BEARING,SEAL END MAIN (-.020)                                       |
| 355  | 1   | -   | 5F403742     | BEARING,PUMP END MAIN (-.020)                                       |
| 356  | 3   | R   | 5F20120      | VALVE PLATE PACKAGE:<br>INCLUDES: ITEMS 357 - 364                   |
| 357  | 1   | -   | NOTAVAILABLE | > VALVE PLATE   |
| 358  | 1   | R   | 5F201083     | > GASKET,VALVE PLATE  |
| 359  | 1   | R   | 5F201093     | > GASKET,CYLINDER HEAD  |
| 360  | 1   | -   | 5F201142     | > VALVE,SUCTION   |
| 361  | 6   | -   | 5F201791     | > SPRING,SUCTION VALVE  |
| 362  | 3   | -   | 5F202843     | > WASHER,GUIDE LOCK   |
| 363  | 2   | -   | 5F202061     | > CLIP,SUCTION VALVE(FOR PLATE ASSY)                                |
| 364  | 3   | -   | AB06GR170    | > CAPSCREW,HEX HEAD   |
| 365  | 3   | R   | 5F20112      | DISCHARGE VALVE GUIDE ASSEMBLY:<br>INCLUDES: ITEMS 366 - 375        |
| 366  | 1   | -   | 5F201191     | > SEAT,INNER  |
| 367  | 1   | -   | 5F201322     | > GUIDE,DISCHARGE VALVE   |
| 368  | 1   | -   | 5F201132     | > VALVE,DISCHARGE   |
| 369  | 6   | -   | 5F201801     | > SPRING,DISCHARGE VALVE  |
| 370  | 1   | -   | 5F201201     | > PLATE,SEAL LOCK   |
| 371  | 3   | -   | AB06GR170    | > CAPSCREW,HEX HEAD   |
| 372  | 2   | -   | AX11AR128    | > PIN,DOWEL (3/16)  |
| 373  | 1   | -   | AX11AR162    | > PIN,DOWEL (1/4)   |
| 374  | 4   | -   | AB06GS169    | CAPSCREW,HEX HEAD   |
| 375  | 4   | -   | AU51YA001    | GASKET,CAPSCREW (5/8)   |
| 404  | 2   | -   | 5F201752     | SLEEVE,UNLOADER   |
| 406  | 12  | -   | 6G451151     | SPRING,UNLOADER LIFTER (6 PACK)                                     |
| 407  | 12  | -   | 6G451191     | PIN,VALVE LIFTER  |
| 409  | 2   | R   | 5F20153      | UNLOADER POWER ELEMENT ASSY(SEE NOTE):<br>INCLUDES: ITEMS 410 - 425 |
| 410  | 1   | -   | 5F201762     | > BRACKET,UNLOADER CYLINDER   |
| 411  | 1   | -   | 5F201711     | > GSKT,UNLOADER CYL.(BOTTOM)  |
| 412  | 1   | -   | 5F201772     | > CYLINDER,UNLOADER   |
| 413  | 1   | -   | 5F201782     | > PISTON,UNLOADER   |
| 414  | 1   | -   | 5F201731     | > ROD,UNLOADER PISTON   |
| 415  | 1   | -   | 5F201811     | > WASHER,UNLOADER SPRING RETAINING                                  |
| 416  | 1   | -   | 5F201802     | > SPRING,INNER  |
| 417  | 1   | -   | 5F201822     | > SPRING,OUTER (5F20-173 ONLY)                                      |
| 418  | 1   | -   | 5F201701     | > GASKET,UNLOADER CYL.(TOP)   |
| 419  | 1   | R   | 5F20242      | > COVER PLATE ASSY,CYLINDER   |
| 420  | 3   | -   | AU61ML171    | > LOCKWASHER (1/4)  |

Bowman Refrigeration  
206-706-3033

| Itm# | Qty | Rec | Part Number  | Description   |
|------|-----|-----|--------------|---|
| 421  | 3   | -   | NOTAVAILABLE | > CAPSCREW, SOCKET HD (1/4-28)  |
| 422  | 1   | -   | AX01AA003    | > PIN, COTTER (1/16 X 3/8)  |
| 423  | 1   | -   | 5F201301     | > WASHER, PLATE   |
| 424  | 1   | -   | 5F202751     | > PIN, CLEVIS   |
| 425  | 1   | -   | 5F205352     | > FORK, UNLOADER  |
| 426  | 1   | -   | 5F201812     | SPRING, OUTER (INTERMEDIATE)  |
| 427  | 2   | -   | 5F201451     | GASKET, UNLOADER BRACKET  |
| 428  | 4   | -   | AB44AA170    | CAPSCREW, SOCKET HD (1/4-28)  |
| 429  | 4   | -   | AU61ML171    | LOCKWASHER, SPRING (1/4):<br>NOTE: THE 5F20 & 30 COMPR USE THE SOFT ASSY (5F30 W/2 UNLOADERS USES THE STIFF ASSY ON CENTER CYL). THE 5F40 & 60 COMPR'S USE ONLY THE SOFT ASSY'S. TO MAKE SOFT INTO STIFF ADD A 5F20-1822 OUTER SPRING. TO MAKE AN INTERMEDIATE ASSY ADD 5F20-1812 OUTER SPRING. |

Bowman Refrigeration  
206-706-3033